

Dynamics 365 Supply Chain Management : What's New in the Warehouse Mobile App

Presenter:

Nicole Joyce

Senior FastTrack Solution Architect

Moderator:

Ashley Desiongco

Senior FastTrack Solution Architect





What type of vegetable do you need to change a flat tire?

Agenda

-
- Release Cadence
 - New Features
 - Roadmap
 - Q&A



Release Cadence

Warehouse Mobile App Release Cadence

~1 release per month

- Incremental bug fixes, performance improvements, feature releases

<1 major update per year

- Indicate key changes in the app

Auto updates

- Recommended to take updates automatically through device management platform

New Features

An abstract graphic on the right side of the slide. It features three overlapping curved shapes. The outermost shape is a dark teal color. Inside it is a lighter blue shape. The innermost shape is white. The shapes are positioned in the bottom right corner, creating a modern, layered effect.

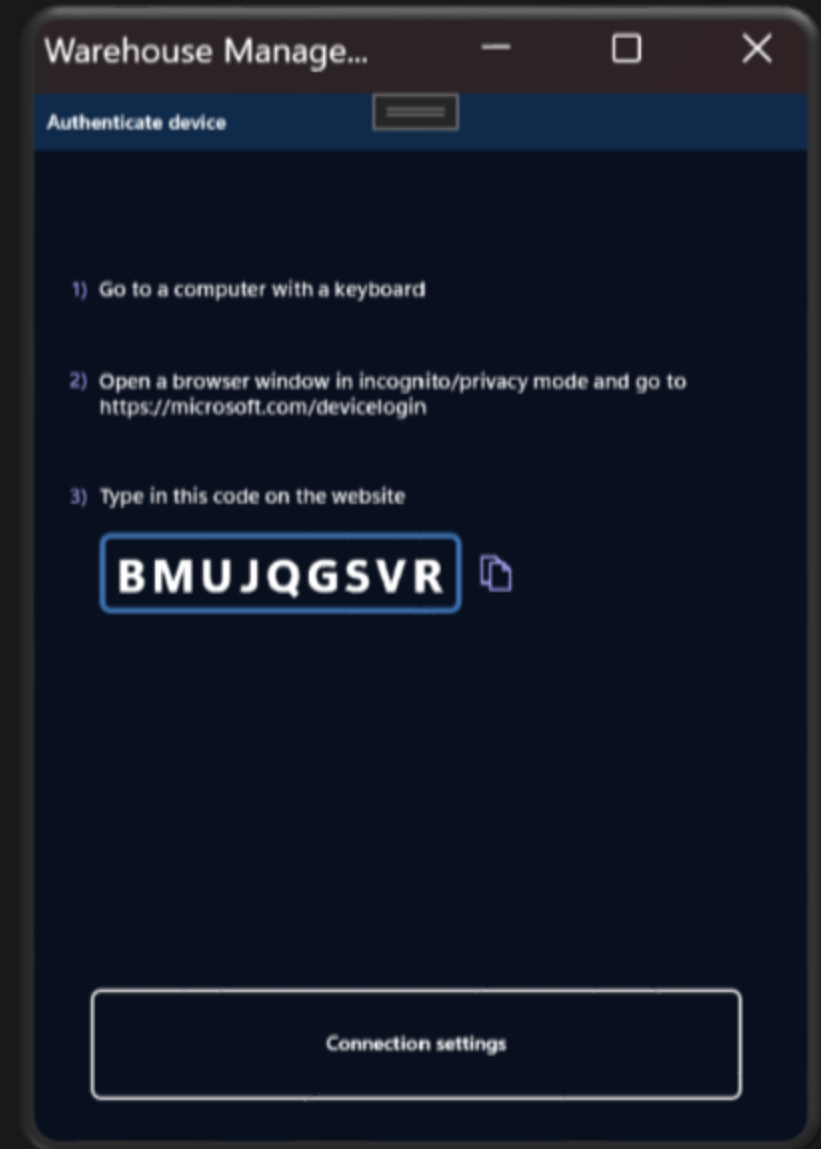
User-based authentication

Released

- 2.1.12 (July 2023):
 - Added the *device code flow* authentication to connect to D365 SCM.
 - This new authentication method simplifies the authentication process because it doesn't require users to manage certificates or client secrets.
 - This doesn't change the worker/user login experience or screen

References:

- [User-based authentication for the Warehouse Management mobile app - Supply Chain Management | Dynamics 365 | Microsoft Learn](#)
- [Mass deploy the mobile app for user-based authentication - Supply Chain Management | Dynamics 365 | Microsoft Learn](#)
- [WMAAuthDemoV3.mp4](#)



User-based authentication FAQ



Q: In which version is the change being enforced?

A: Major version 3.0

Q: Can I mass deploy the app with the new authentication method?

A: Yes, as of this month (March 2024)

Q: How often does the app have to be re-signed into?

A: The default (and max) session timeout is 90 days

Demo

Tap to change

DeviceCode

Edit connection settings

Connect

Set up connection

Microsoft Dynamics Learn



Enter code

Enter the code displayed on your app or device.

Code

Next



1x



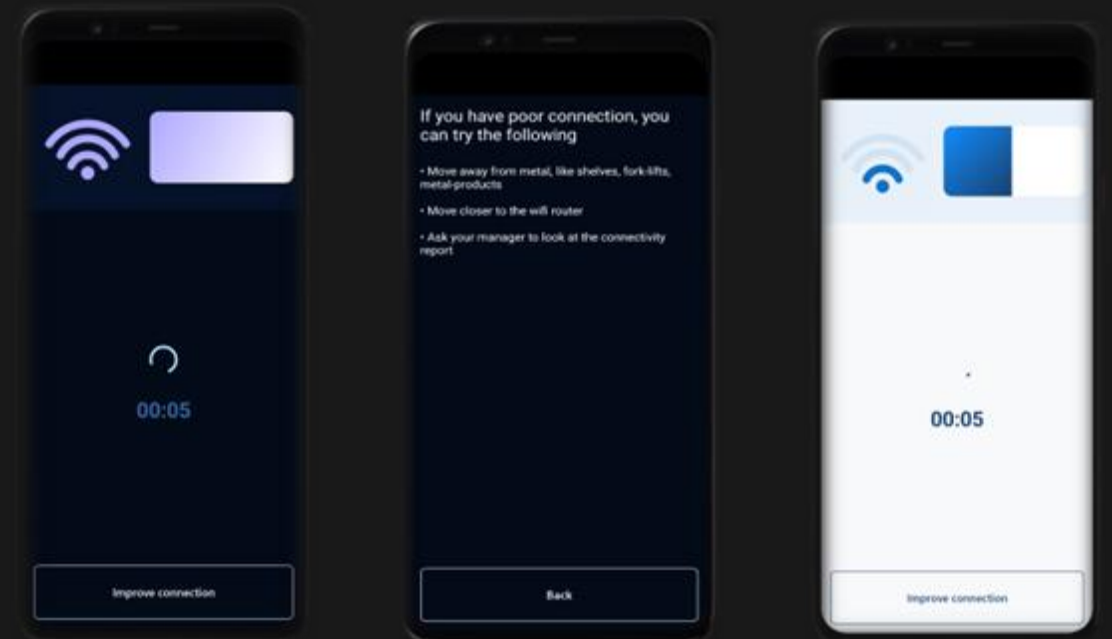
Wi-Fi strength indicator

Released

- 2.1.12 (July 2023):
 - Added the ability to collect telemetry data about the Wi-Fi strength seen at locations where the app is used
- 2.1.15 (September 2023):
 - Added the Wi-Fi strength indicator:
 - Indicates the strength of the Wi-Fi connection and adds a new throttling algorithm to ensure connectivity in unstable networks.

Reference:

- Enable warehousing telemetry with Application Insights



stappinsight | Logs

New Query 1*

mydatasetstappins... Select scope

Run Time range: Set in query Save Share New alert rule Export Pin to Format query

```

6 activityGraph = customDimensions.activityGraph
7 backendProcessingTime = customDimensions.backendProcessingTime
8 batteryLevel = customDimensions.batteryLevel
9 batterySession = customDimensions.batterySession
10 batteryState = customDimensions.batteryState
11 deviceId = customDimensions.deviceId
12 isEnergySaverTurnedOn = customDimensions.isEnergySaverTurnedOn
13 powerSource = customDimensions.powerSource
14 renderingDurationInMilliseconds = customDimensions.renderingDurationInMilliseconds
15 roundTripLatencyDurationInMilliseconds = customDimensions.roundTripLatencyDurationInMilliseconds
16 clientCity = client_City
17 clientCountryOrProvince = client_StateOrProvince
18 clientCountryOrRegion = client_CountryOrRegion
19 // Available from Warehouse Management mobile app version 2.1.12
20 networkConnectionProfiles = customDimensions.networkConnectionProfiles
21 networkAccess = customDimensions.networkAccess
22 wiFiSignalStrength = customDimensions.wiFiSignalStrength
23 lastKnownWMSLocation = customDimensions.LastKnownWMSLocation
    
```

Search Filter Group by: Solution

Collapse all

Favorites You can add favorites by clicking on the star icon

Application Insights

- availabilityRequests
- browserTimings
- customEvents
- customMetrics
- dependencies
- exceptions
- pageViews
- performanceCounters
- requests
- traces

Results Chart

clientStateOrProvince	clientCountryOrRegion	networkConnectionProfiles	networkAccess	wifiSignalStrength	LastKnownWMSLocation
Greater London	United Kingdom	WiFi	Internet	None	REC'd
Greater London	United Kingdom	WiFi	Internet	None	REC'd
Greater London	United Kingdom	WiFi	Internet	None	REC'd
Greater London	United Kingdom	WiFi	Internet	None	REC'd
Greater London	United Kingdom	WiFi	Internet	Poor	REC'd
Greater London	United Kingdom	WiFi	Internet	None	REC'd
Greater London	United Kingdom	WiFi	Internet	Poor	REC'd
Greater London	United Kingdom	WiFi	Internet	Poor	REC'd
Greater London	United Kingdom	WiFi	Internet	Poor	REC'd
Greater London	United Kingdom	WiFi	Internet	Poor	REC'd

0s 59ms Display time (UTC+00:00) Query details

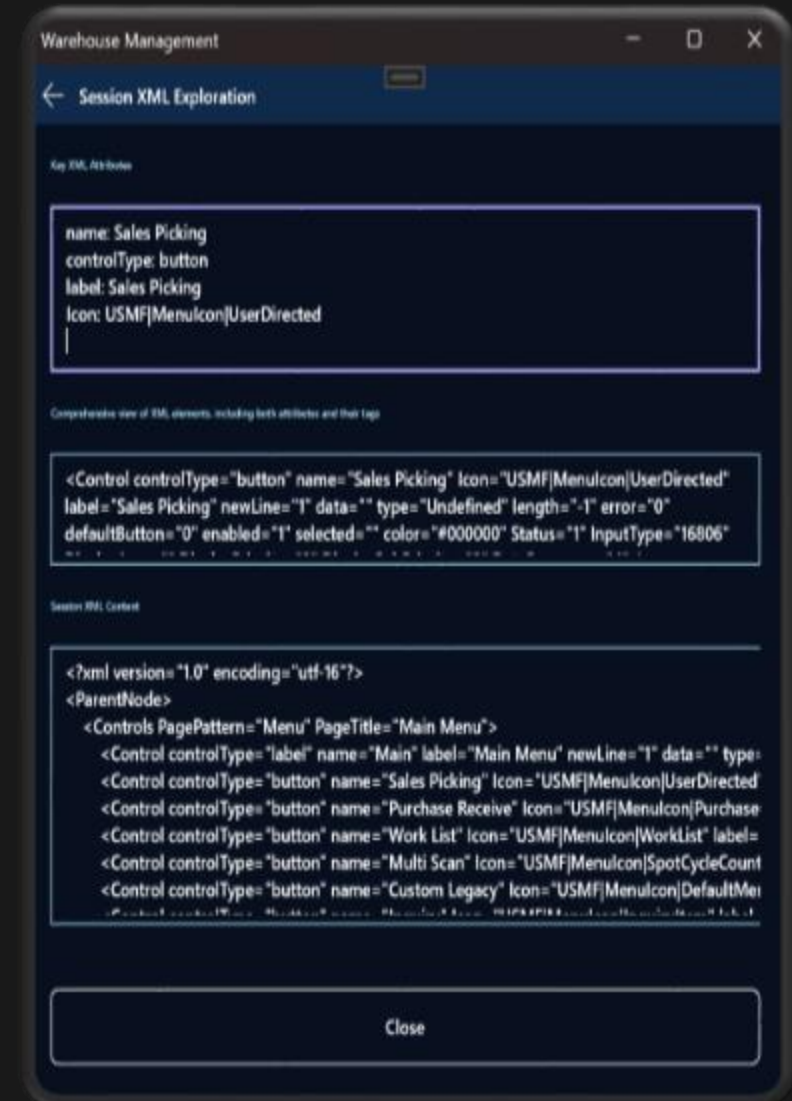
Configuration mode

Released

- 2.1.15 (September 2023):
 - Added a new configuration mode
 - Intended for developers and advanced users
 - Display and edit the XML code used to build and customize the user interface

Reference:

- [Inspect details of active Warehouse Management mobile app sessions](#)



Multi-level detours

Released

- 2.1.17 (October 2023):
 - Added support for multi-level detours
 - Supports two levels of detours out of the box
 - If necessary, customize your system to support three or more levels of detours by creating code extensions on the WHSWorkUserSessionState table

Reference:

- [Configure detours for steps in mobile device menu items - Supply Chain Management | Dynamics 365 | Microsoft Learn](#)



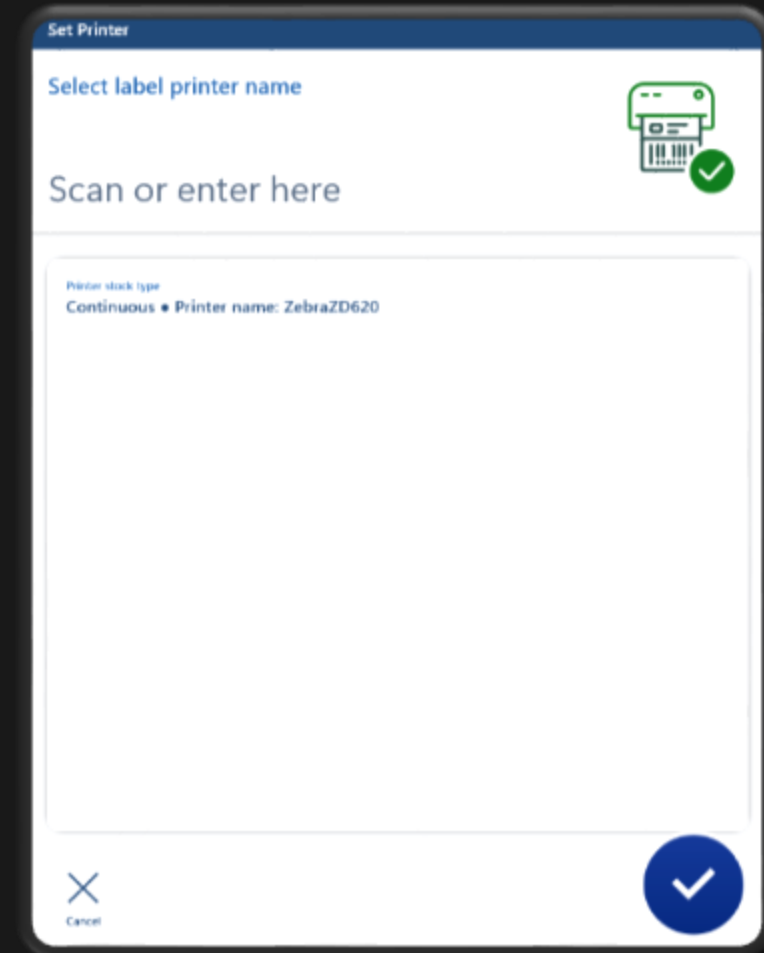
Dynamic printer selection

Released

- 10.0.36 (D365 SCM Wave 2 2023):
 - Added a new Indirect mobile device menu item: *Override label printer*.
 - Allows the user to simply scan a new printer to override the default one assigned to their user.

Reference:

- [Dynamic printer selection - Supply Chain Management | Dynamics 365 | Microsoft Learn](#)



Process enhancements in Wave 1 2024

New functionality planned:

- Full LP movement policy for mobile device
- Location strategy - *Consolidate including incoming work*
- Transfer order receiving process – now for all transfer order receiving, users can set the “Split the registration and receiving” parameter

Reference:

- [Preview of Dynamics 365 Supply Chain Management 10.0.39 \(April 2024\) - Supply Chain Management | Dynamics 365 | Microsoft Learn](#)

Mobile device menu items

Menu item name	Title	Mode	Use existing work
movementFullLP	movementFullLP	Work	<input type="radio"/> No

General

Display inventory status <input type="radio"/> No	Use process guide <input type="radio"/> No	Confirm cancel <input type="radio"/> No	Full LP movement policy Automatically move full LP
Use default data <input type="radio"/> No	Barcode data policy [Dropdown]	Display container type <input type="radio"/> No	Use specification for single item movement Automatically move full LP for single item LP
Work creation process Movement	Generate license plate <input type="radio"/> No	Deferred operation processing p... Respect settings	Automatically move full LP

Location Directive Actions

+ New Delete Move up Move down Edit query Copy

Sequen...	Name	Fixed location usage	Allow neg...	Batch ena...	Strategy
1	consolidateWithWork	Fixed and non-fixed locati...			Consolidate including incoming work
3	empty	Fixed and non-fixed locati...			Empty location with no incoming work

Warehouse management parameters

General

Set up parameters for Warehouse management

Company information

Initialize release to warehouse rule

GS1 company prefix
[Text Box]

Location profiles

Location types

Receiving

Exception for missing items from...	Transfer order receiving process	Enable license plate receiving his...
ASN	Combine the registration a...	<input type="radio"/> No

Warehouse App Task Validation Framework

Testing Benefits:

- Unit/Regression testing
- Automated testing
- Load and volume testing

Reference TechTalks:

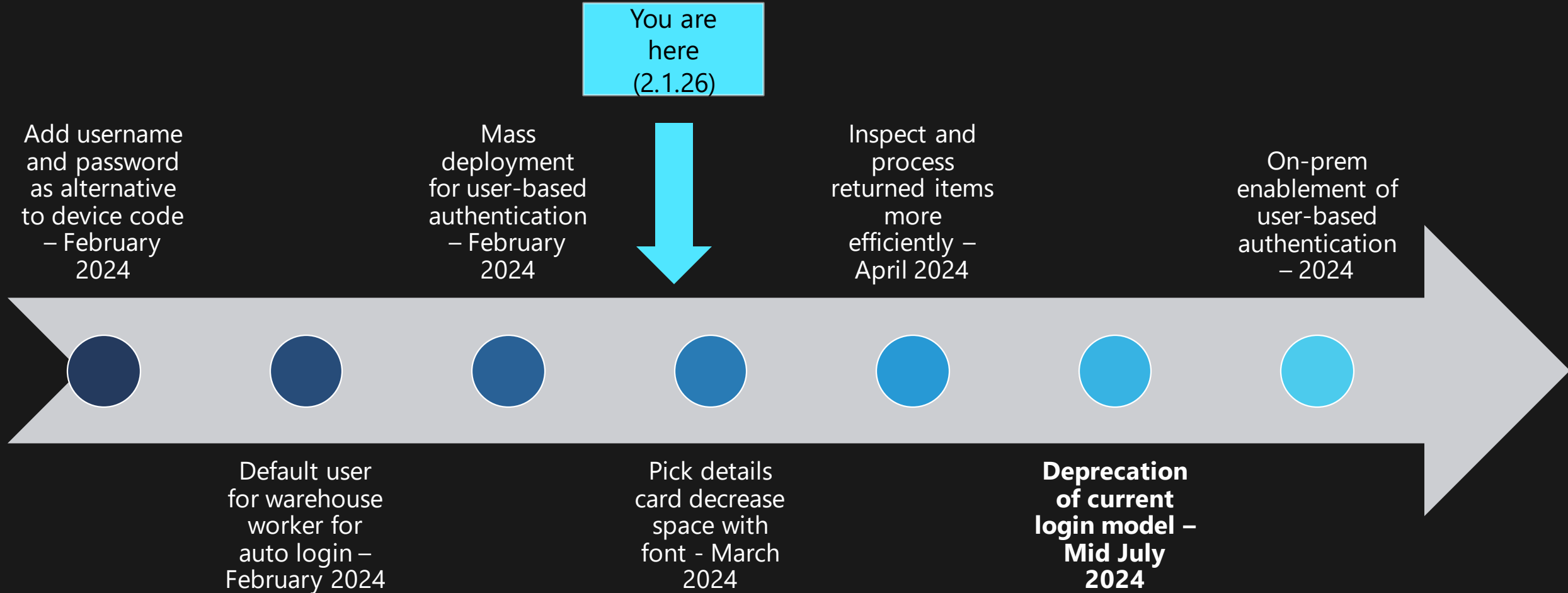
- [Warehouse App Task Validation Framework](#)
- [What's New in Warehouse App Task Validation Framework in Dynamics 365 Supply Chain Management](#)
- [Performance Testing Using JMeter and Warehouse App Task Validation Framework in Dynamics 365 Supply Chain Management](#)



Roadmap

The image features a dark navy blue background. On the right side, there are two overlapping squares: a light blue one in front and a yellow-green one behind it. A white circular shape is partially visible on the far right, overlapping the yellow-green square.

Coming next



Q&A



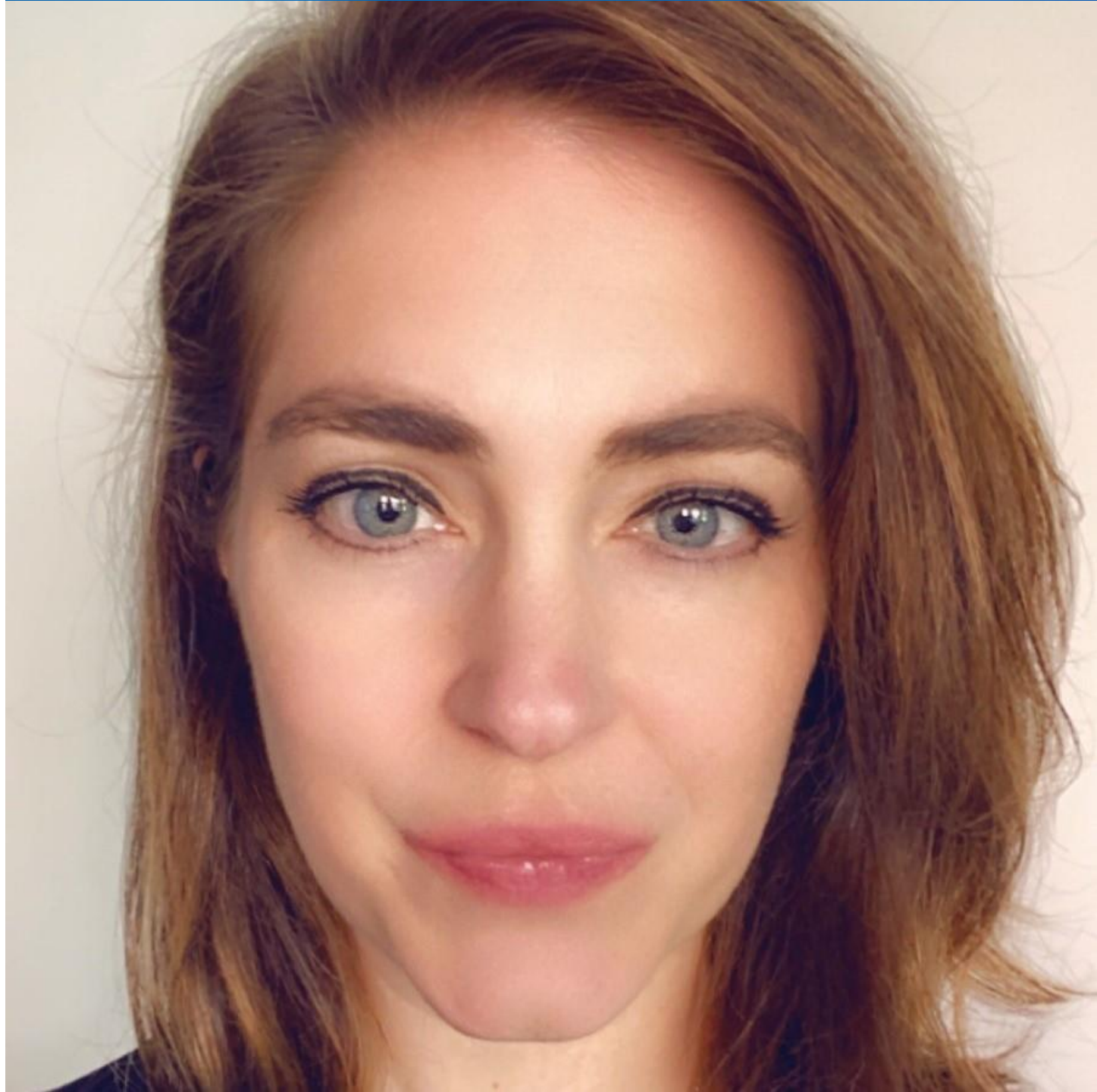
Q: What type of vegetable do you need to change a flat tire?

A: aSPAREagus!

Connect with me:

[linkedin.com/in/nicolegump/](https://www.linkedin.com/in/nicolegump/)

ngump@microsoft.com



Thank you!

