



Beyond the DRA: Cloud Label Printing

Presenter(s):

Ashley Desiongco – Senior Solution Architect

Bostjan Golob – Principal Software Engineer

Moderator(s)/Q&A:

Nicole Joyce – Senior Program Manager

Sohaib Khan – Senior Program Manager



Meet your presenters



Ashley Desiongco
Senior Solution Architect

[linkedin.com/in/ashleydesiongco](https://www.linkedin.com/in/ashleydesiongco)



Bostjan Golob
Principal Software Engineer

[linkedin.com/in/bostjangolob](https://www.linkedin.com/in/bostjangolob)

Agenda

-
- What's new with label printing
 - Cloud label printing overview
 - Use cases
 - Demos
 - Q&A

What's new in label printing

Label layouts



License plate labels option

Variables

Template support



Custom labels



Data sources

Print button



Dynamic printer selection



Label printer setup

Location/user defaults

Mobile device menu item

What's new in label printing

Label layouts



License plate labels option

Variables

Template support

Standard view ▾

Warehouse management parameters

General

- Loads
- Location directive failures
- Cycle counting
- Product filters
- Reports
- Packing
- Print management
- Number sequences

Set up parameters for Warehouse management

Company information

Location profiles

Location types

Receiving

Bar codes

License plates

Default license plate unit:

Transit warehouse license plate policy:

Default container type:

License plate tracking validation:

Wave processing

Adjustments

Work

LICENSE PLATE LABELS

Use label layouts for license plate labels

☒ Yes

What's new in label printing

Label layouts



License plate labels option

Variables

Template support

Standard view ▾

Label layout

Label layout type: License Plate Label ▾

BT LP Label

LP Label
Generic LP label with date

Definition type: Variables ▾

Enable label template support: ☐ No

Printer stock type: A1 ▾

Description:

Label layout data source ID:

Date, time, and number format:

Printer text layout

Fields Methods

Fields

- License plate label ex...
- To country/region
- To country/region
- To state
- To city
- To ZIP/postal code
- To Street
- To name
- Resource
- To zone ID

SYSTEM VARIABLES

Variable name	Value
LabelFile	//path
Quantity	

DATA VARIABLES

+ New - Delete Insert field reference

Variable name	Value
License plate ID	

What's new in label printing

Label layouts



License plate labels option

Variables

Template support

Custom labels



Standard view ▾

Label layout

Label layout ID

Container Contents

Definition type

ZPL ▾

Enable label template support

☒ Yes

Printer stock type



Description

Container Content Label

Label layout data source ID

Container ▾

Date, time, and number format



Mobile device menu item

What's new in label printing

Label layouts



License plate labels option

Variables

Template support

Custom labels



Data sources

Print button

Dynamic printer selection



Label printer setup

Location/user defaults

Mobile device menu item

What's new in label printing

Label layouts



License plate labels of

Variables

Standard view ▾

Label layout

Filter

Label layout type: Custom label ▾

Location tag

Location tag

Label layout ID: Location tag

Description: Location tag

Definition type: Variables ▾

Label layout data source ID: Location ▾

Enable label template support: ☒ No

Printer stock type

Date, time, and number format: ▾

Printer text layout

TABLES

Tables

Locations (WMSLocati...

Fields

Methods

Fields

Additional Zone 3

Additional Zone 2

Additional Zone 1

Zone ID

SYSTEM VARIABLES

<input type="radio"/>	<input checked="" type="radio"/>	Variable name	Value
<input type="radio"/>	<input checked="" type="radio"/>	LabelFile	//path
<input type="radio"/>	<input type="radio"/>	Quantity	

Label layout data source

Standard view ▾

Filter

<input type="radio"/>	Label layout data source ID	Description	Label layout type	Custom label root table	Join type
<input checked="" type="radio"/>	Container	Container	Container label		Inner join
<input type="radio"/>	Location	Location	Custom label	WMSLocation	Inner join

e menu item

What's new in label printing

Label layouts



License plate labels option

Custom labels



Data sources

Dynamic printer selection



Label printer setup

←

Edit

+ New

🗑️ Delete

Generate check digit

On-hand list

Transactions

Location setup wizard

Create inventory movement work

Options

🔍

Personalize

Always open for editing

Personalize this page

Add to workspace ▾

Page options

Security diagnostics

Advanced filter or sort

Record info

Share

Get a link ▾

Create a custom alert ▾

Manage my alerts

Custom labels

Print Locations

Power Automate

See your flows

Create a flow

Locations

Standard view ▾

🔍 Filter

☒ Generate check digits for location

<input type="radio"/> Warehouse	↑ Location	Check digits	Location profile ID	Zone ID	Additional Zone 1	Additional Zone 2
<input checked="" type="radio"/> 24	10000		FLOWRACK	PICKZONE1		

Label layouts



License plate labels option

Standard view ▾

Warehouse management parameters

General

Loads

Location directive failures

Cycle counting

Product filters

Reports

Packing

Print management

Number sequences

Set up the information for the reports

Bill of lading

Picking list

Load report

Hazardous materials report parameter

Custom labels

Display custom label print buttons

Never ▾

Never

On all forms

Dynamic printer selection



Label printer setup

← Edit + New Delete Generate check digit On-hand list Transactions Location setup wizard Create inventory movement work Options 🔍

Personalize

Always open for editing
Personalize this page
Add to workspace ▾

Page options

Security diagnostics
Advanced filter or sort
Record info

Share

Get a link ▾
Create a custom alert ▾
Manage my alerts

Custom labels

Print Locations

Power Automate

See your flows
Create a flow

Locations

Standard view ▾

🔍 Filter

☒ Generate check digits for location

<input type="radio"/> Warehouse	↑ Location	Check digits	Location profile ID	Zone ID	Additional Zone 1	Additional Zone 2
<input checked="" type="radio"/> 24	10000		FLOWRACK	PICKZONE1		

What's new in label printing

Label layouts



License plate labels option

Variables

Template support



Custom labels



Data sources

Print button



Dynamic printer selection



Label printer setup

Location/user defaults

Mobile device menu item

What's new in label printing

Label layouts



Custom labels



Dynamic printer selection



Label printer setup

Location/user defaults

Mobile device menu item

Label printers

Standard view ▾

Filter

	Connection type	Printer name	Printer stock type	Batch print	Maximum file ...	Label print service instance	Label print service printer name	Label print ...
<input checked="" type="checkbox"/>	External label service ▾	BT Printer ▾	▾	<input type="checkbox"/>	0.00	* ▾	BT Printer 1	Only use the
<input type="checkbox"/>	Document routing agent/Hybrid	ZPL Printer	A1	<input type="checkbox"/>	0.00			Only use the

Variables

Print button

Template support

What's new in label printing

Standard view ▾

Default label printers

Users

Locations

+ New

Delete

Filter

	Printer stock type	Warehouse	User ID	Printer name
<input checked="" type="radio"/>	A1	24	ASH	ZPL Printer

Standard view ▾

Default label printers

Users

Locations

+ New

Delete

Filter

	Printer stock type	Warehouse	Location scope type	Location scope	Printer name
<input checked="" type="radio"/>	A2	62	Location	Pack	Shipping label

Dynamic printer selection

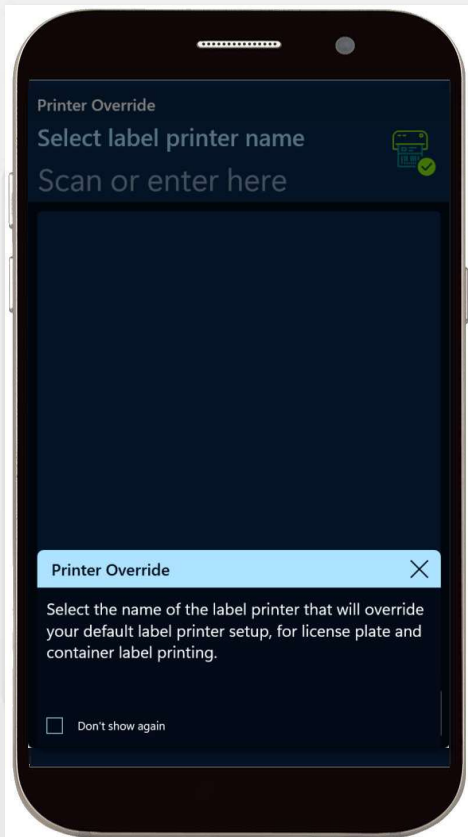


Label printer setup

Location/user defaults

Mobile device menu item

What's new in label printing



Custom labels



Standard view ▾

Mobile device menu items

Menu item name	Title	Mode	Use existing work
Override Printer	Printer Override	Indirect ▾	<input type="radio"/> No

General

Activity code Override label printer ▾	Use process guide <input checked="" type="checkbox"/> Yes	Barcode data policy ▾
---	--	--------------------------

Dynamic printer selection



Label printer setup

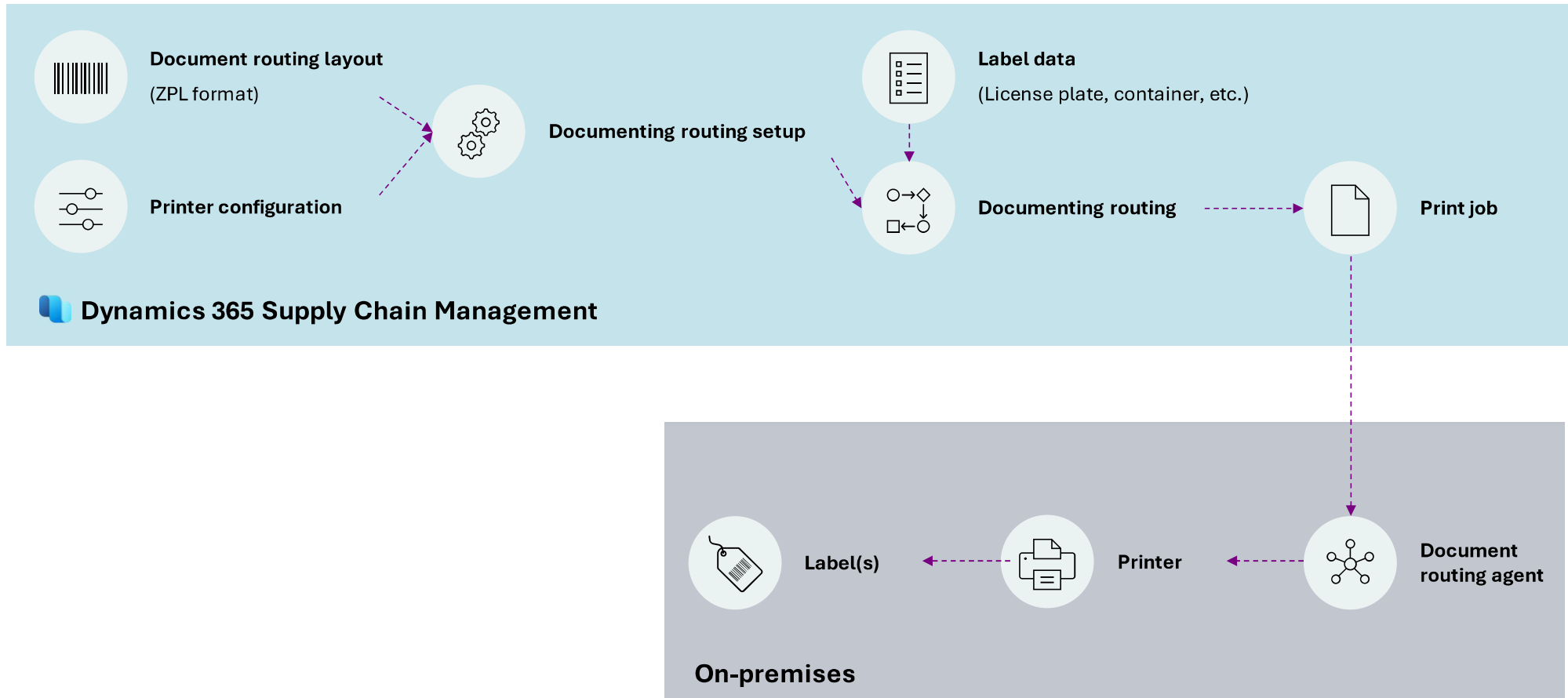
Location/user defaults

Mobile device menu item

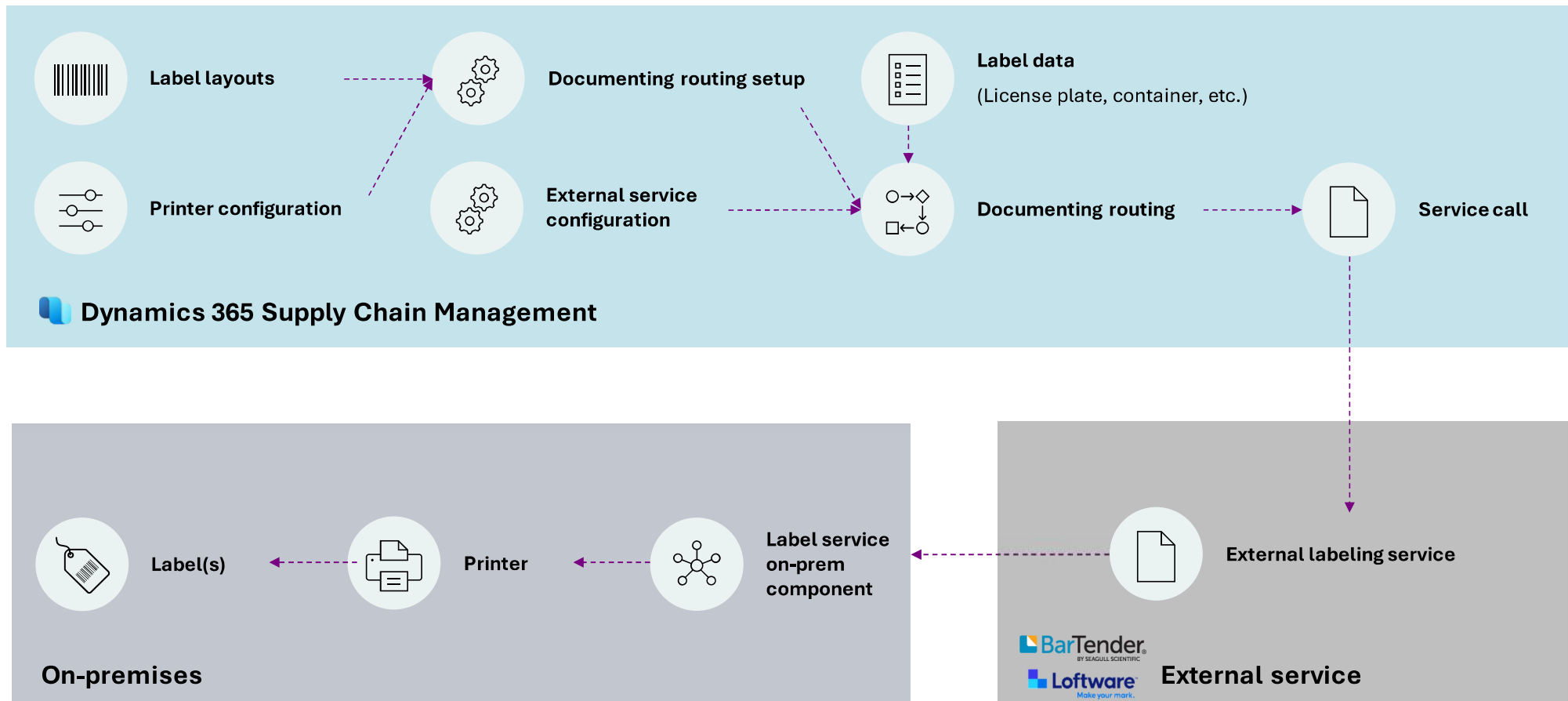
Cloud Label Printing Overview



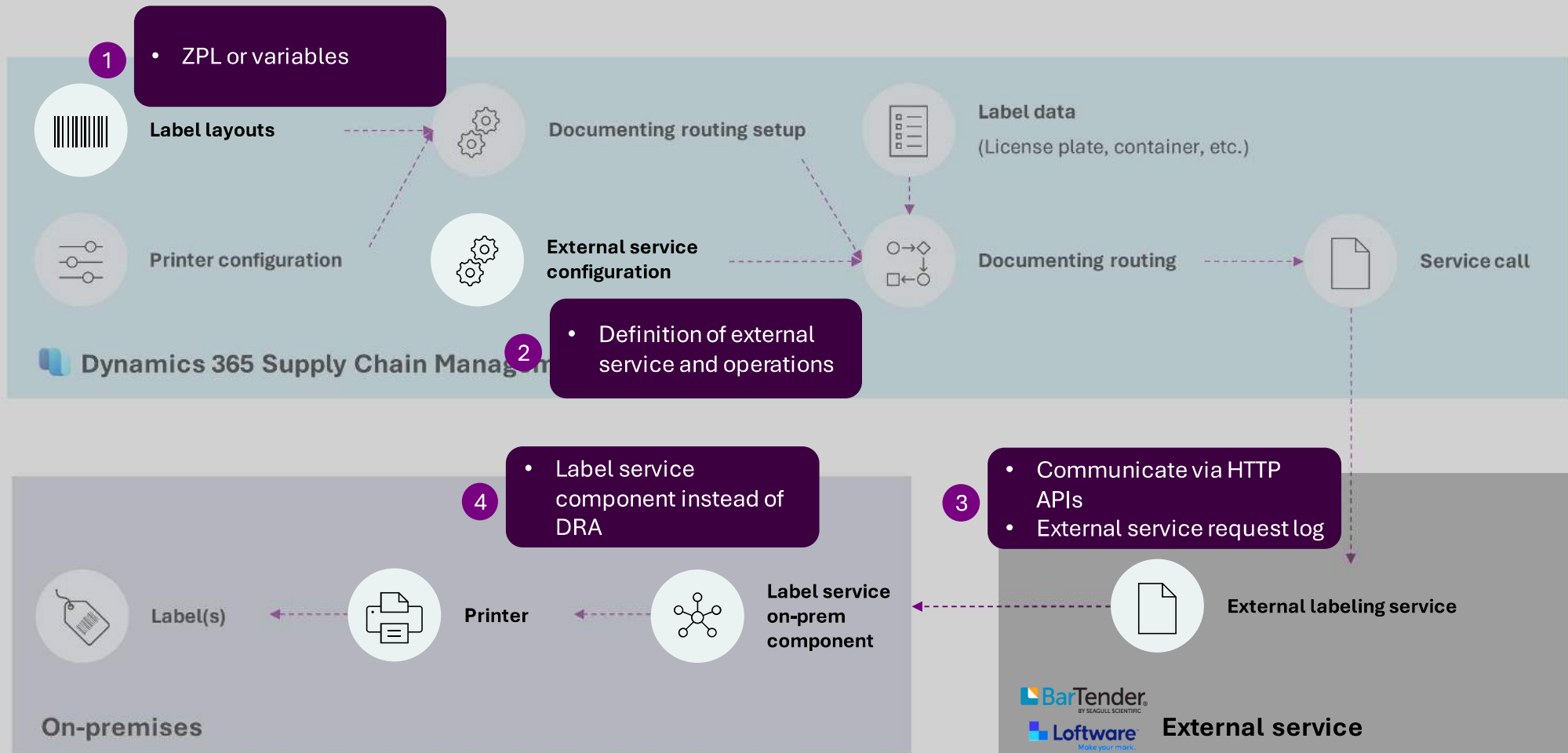
Printing labels via the Document Routing Agent (DRA)



Printing labels via an external service (cloud label printing)



Printing labels via an external service (cloud label printing)



Use cases



Use cases



Document routing agent

- ▲ Cost effective
- ▲ Simple
- ▼ Scalability
- ▼ Label design



Cloud label (external service)

- ▲ Specialized labeling
- ▲ Scalability
- ▼ Additional cost
- ▼ Architecture considerations

Scenario



Demo



Dashboard

[Dashboard](#) / Dashboard

Recent Printing Activity (last 24 hours)

[History](#)

Computer	Recently Printed	Last Print	Recent Errors
Cloud Printing Service	4	9:37 AM	0

1

 5 items per page 1 - 1 of 1 items

Recent Errors (last 24 hours)

[History](#)

Good job! You have no recent errors.

Computers running Automation

[All computers](#)

 BOSTJAN-P1G4.WORKGROUP Running	 DYNAMICS365-SCM.WORKGROUP Running
 DESKTOP-VNTRT29.WORKGROUP Offline	

Your applications

[All Applications](#)

Applications shared with you appear here.

Common Actions

-  Print from your applications
-  Add new managed printer
-  Create new label
-  Download Desktop Designer
-  Download Web Client

Workflow Requests

[All Workflow Requests](#)

There are no documents waiting for approval.
--

License Information

[License details](#)

Product edition
Loftware Cloud Business
Used printer seats
1/30

External service definitions -- Finance and Operations

External service instances -- Finance and Operations

Label printers -- Finance and Operations

Label layout -- Finance and Operations

Document routing -- Finance and Operations

Finance and Operations

RequestBin -- A modern request bin

RequestBin.com -- A modern request bin

https://aurorabapenv0d3b9.operations.int.dynamics.com/?cmps=usmf&mi=WhatExternalServiceDefinitions

Finance and Operations Preview

Search for a page

USMF : Continuous Entertainment System 100k

AD

Filter

BTCloud
BarTender Cloud

BTOnPrem
BarTender On-prem

NLPrint
NiceLabel Cloud Print API

NLTrigger
NiceLabel Cloud Trigger API

RequestBin1
Request bin 1

Standard view

External service definitions

External service definition

BTCloud

Description

BarTender Cloud

External service operations

Edit operations

External service...

Description

Relative URL

Print

Print

/api/actions

Label print service

Print operation

Variables print operation

Variable label layout template

PrintBTWAction:

DocumentFile: librarian//Main/SystemVariables.LabelFile\$

Printer: "%D365PrinterName%"

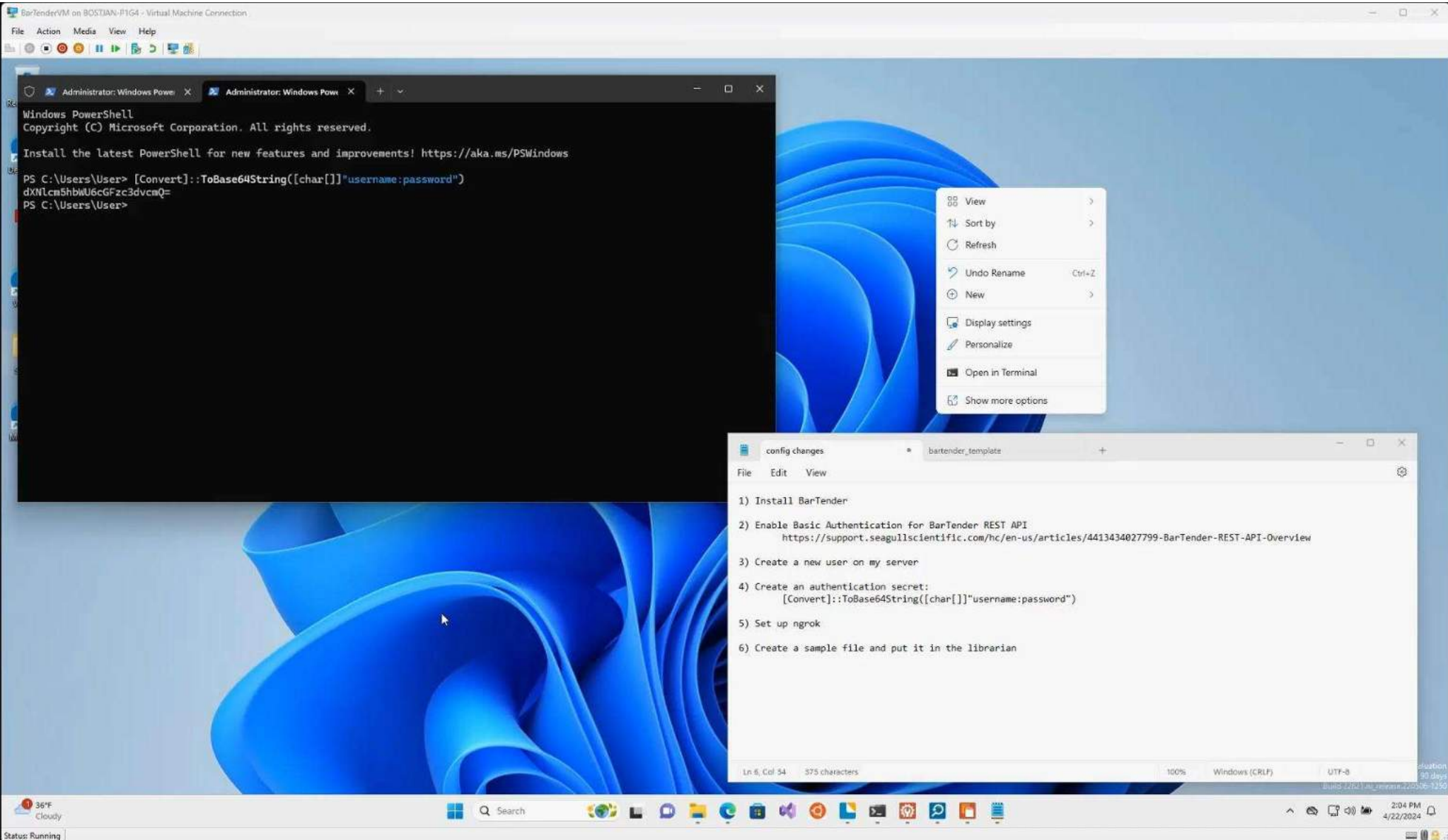
Copies: \$SystemVariables.Quantity\$

NamedDataSources:

[[Row Table=LabelLayoutVariable

\$LabelLayoutVariable.Variable\$: \$LabelLayoutVariable.Value\$

]]



Q&A



FAQs

Question	Answer
In this Software integration, does it support multiple types of barcode printing, including GS1 and QR code scanning?	A complete list of Software capabilities are not in scope of this documentation however, D365 simply sends the external service the variable values. Software can then translate into the appropriate barcode type.
Is it planned to have cloud label printing for wave labels as well?	There is no commitment at this time.
Do custom labels include data that would allow us a retailer to generate product hangtag labels with pricing? Is it extensible if we needed to add data elements that might not be available in the core product?	Yes, the custom label feature allows you to access fields from data sources like products. You can also join related tables in the data source definition. Any custom fields may require additional development.
If we use Lasernet or StreamServe ExStream to handle our printing needs what advantage would this solution give us?	Lasernet has its own D365 integration which can be used in place of the feature covered in this session. The scope of this solution is only for pre-built Bartender and Software integration.
Will this work as well in Production floor execution or only on warehouse management?	License plate labels are supported by this feature which are used in both warehouse management and production RAF processes.
Are there any plans to equip the Custom label print dialog with a user-defined quantity of labels? If so, what is the ETA? This is high on the ideas.	There is no commitment at this time.
As a company that prints 40,000 labels a day, what is the recommended solution? We have over 30 DRAs and over 1500 printers. It is not cost-effective or simple running a servers per DRA client at that scale, and cloud label printing will add additional costs based on the number of labels we print. Is there a plan yet to improve the DRA framework to reduce the need to have a separate server per DRA client?	There is no commitment for future DRA work. If the DRA solution is not meeting your printing needs, please look into the cloud label solution.
Is this valid for check printing or only label printing?	This is only for label printing.
Is there an option to periodically purge the external label service log?	Not yet, but we are working on adding purging to all logs that are still missing the function.
If external service is down, how will D365FO handle the prints in queue?	There is no retry from D365FO side. It's up to the service to have a HA configuration. You can use existing reprint options in case the label wasn't printed.
Is it possible to use Azure Application Proxy to connect to on prem Bartender? Or would something more specific like Azure APIM be needed?	With Azure Application Proxy, you may run into authentication problems however we have seen this work successfully with Azure APIM.
How does Software know which variable to be overridden from D365FO values? Do we need to put placeholder in the label?	In F&O, we need to define the variables in the label layout form. In Software, you should add placeholders in the label design and at runtime it will replace placeholders with the variable values.
How do we map cloud printers to local printers?	For local printers, please use the DRA or an on prem component of your external service. For cloud printers, connect directly to the cloud.

Additional resources



[Microsoft Learn documentation](#)



[Dynamics 365 Ideas – Warehouse management](#)



[D365 WHS TMS Community](#)



[Warehouse management app Community](#)



[TechTalk Series: Warehouse & Transportation Management in Dynamics 365 Supply Chain Management](#)



[Improve Labelling Processes blog post](#)

Dankie

Faleminderit

Shukran

Chnorakaloutioun

Hvala

Blagodaria

Děkuji

Tak

Dank u

Tānan

Kiitos

Merci

Danke

Ευχαριστώ

A dank

Mahalo

ἰτιῖ.

Dhanyavād

Köszönöm

Takk

Terima kasih

Grazie

Grazzi

Thank you!

감사합니다

Paldies

Choukrane

Ačĭū

Благодарам

ありがとうございました

谢谢

Баярлалаа

Dziękuję

Obrigado

Mulțumesc

Спасибо

Ngiyabonga

Ďakujem

Tack

Nandri

Kop khun

Teşekkür ederim

Дякую

Хвала

Diolch

